


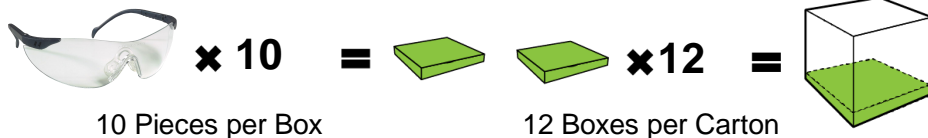




<b>Temple</b>	Nylon/ polycarbonate
<b>Lens</b>	Polycarbonate, thickness: 2,3 mm
<b>Weight</b>	29 g

Reference	Frame Colour	Lens Colour	Features	Frame Marking	Lens Marking	Lens Norms
 60510	Navy blue	Clear	Hard coated	FT	2-1,2 1FT K	EN 170
 60513	Black	Smoke	Hard coated	FT	5-3,1 1FT K	EN 172
 60516	Navy blue	Yellow	Hard coated	FT	2-1,2 1FT K	EN 170

## Packaging & Storing



**120 Pieces in 1 Carton**

Always transport and store in the original packaging. Store in a dry place, away from direct sunbeam.

## Product Standards

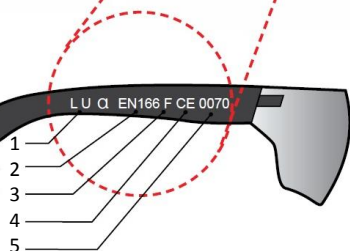
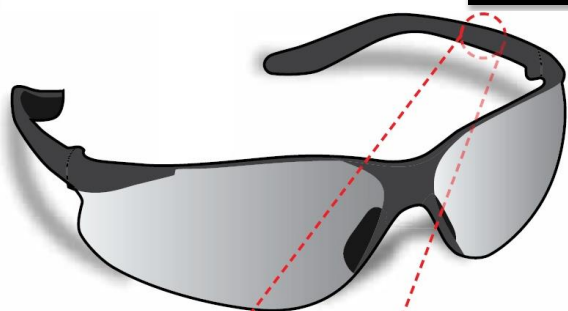
This article is in conformity with the model of individual safety equipment which correspond to

**The CE Type-examination certificate n° 0776  
Delivered by INSPEC (notified body n° 0194)**

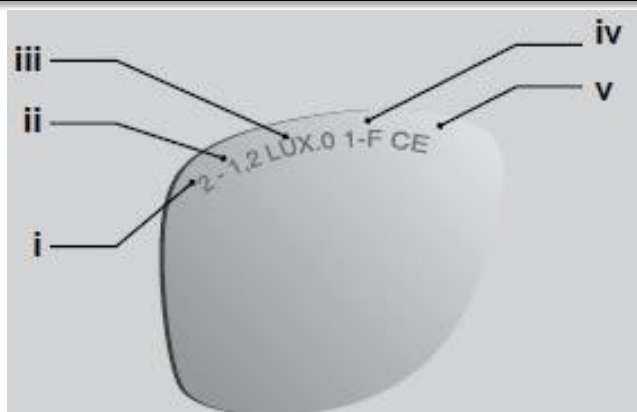


This model is in conformity with the standard **EN 166:2001**

## General Norms & Explanation



1. Manufacturer
2. Standard
3. Mechanical Resistance
4. Certification
5. Notified body



- i. Code N°
- ii. Protection class
- iii. Manufacturer
- iv. Optical Class
- v. Mechanical Resistance Certification Marking

EN 166	Specification (optical quality, resistance to usual and mechanical risks and to impacts)
EN 169	Welding Filters
EN 170	Ultraviolet filters
EN 172	Sunglare filters for industrial use
EN 175	Welding equipments
EN 379	Welding filters with variable shade or dual shade
EN 1731	Mesh faceshield
EN 12312-1	Sunglasses and related eyewear : Sunglasses for general use

Temperature between -5° (± 2°) & 55° (± 2°)	T
Hard coated lens	K
Anti-fog coated lens	N
Protection against liquids	3
Enhanced solidity	S
Protection against big dusts	4